


One IP Probe for all Links

## F-353F Series

### SS-7 to SIGTRAN

F-353F allows to monitor multiple STM-1/OC-3 links carrying SS-7 signaling using a probe supporting Ethernet input and SIGTRAN capability.

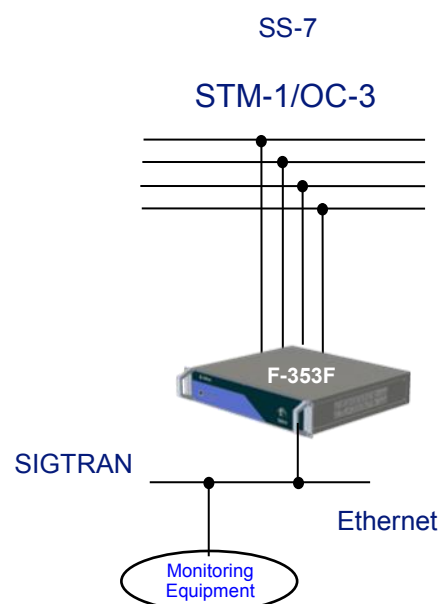
F-353F is a non intrusive broadband filter designed to filter SS-7 messages from STM-1/OC-3 lines, convert them to SIGTRAN and deliver them to Ethernet output.

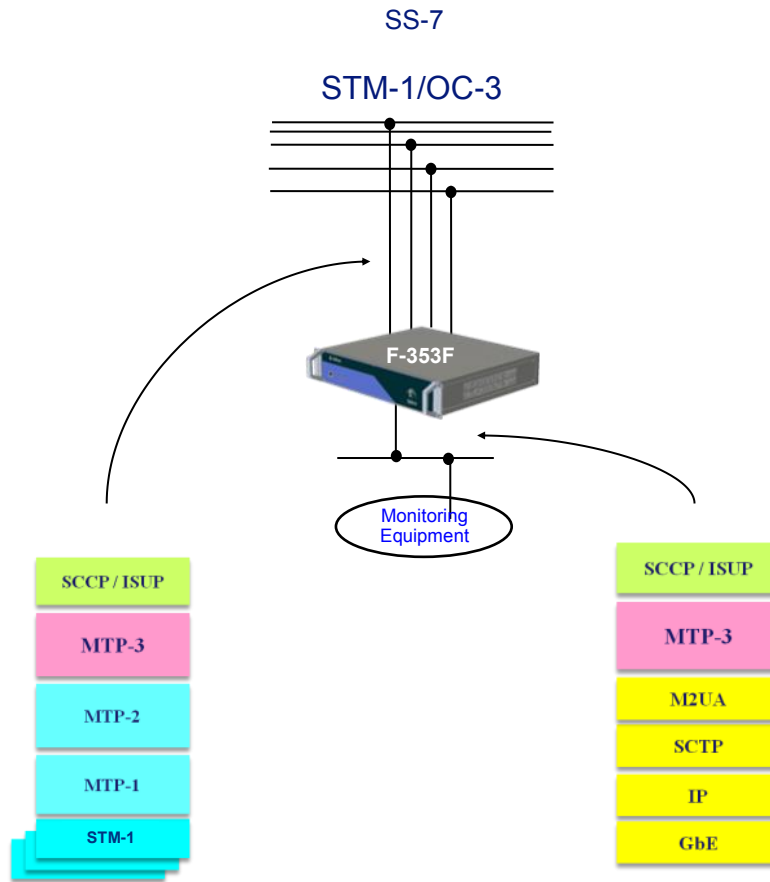


SS7/TDM  
to  
SIGTRAN



*Ethernizer extends the usefulness  
of Monitoring Equipment*

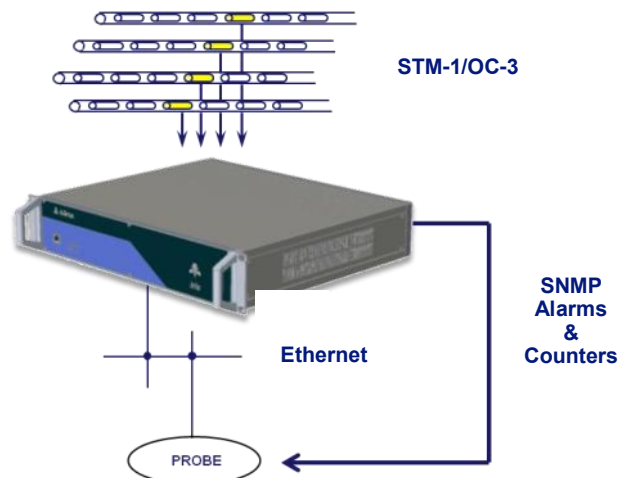




## Alarms and Counters

A rich series of Layer 1 and Layer 2 Alarms, together with Counters and Statistics are available with Ethernizer.

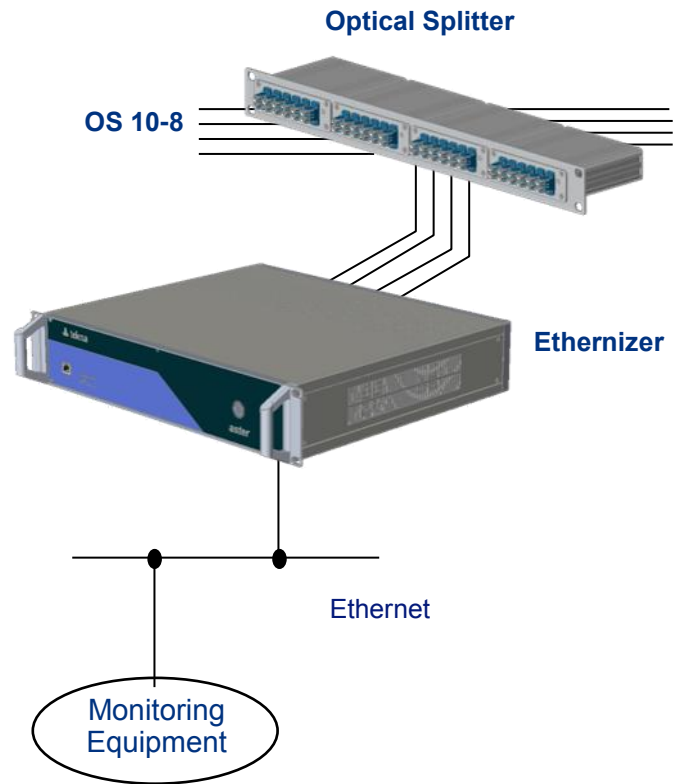
F-353F can be integrated in any Monitoring System by means of SNMP protocol.



## SS-7 on STM-1/OC-3

### F-353F

F-353F allow to monitor up to 4 STM-1/OC-3 Channelized links carrying SS7 Traffic using a SIGTRAN Probe

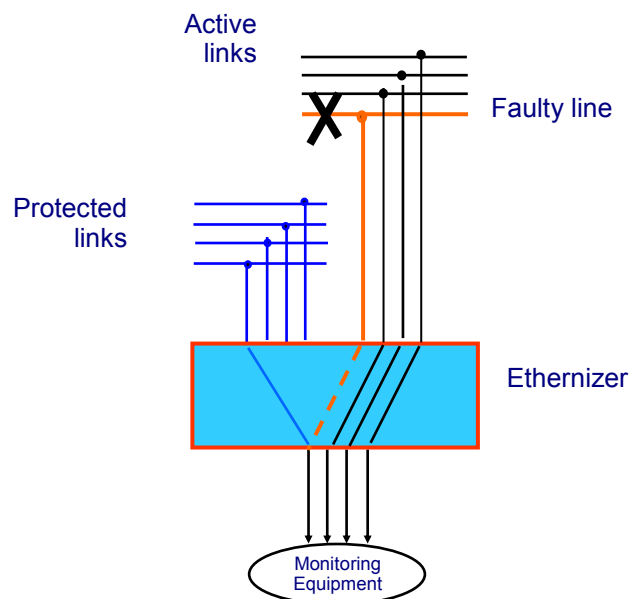


### Constant Monitoring with APS

Redundant links are often deployed through out SDH/SONET networks to provide fault tolerance.

Ethernizer F-353F support APS (Automatic Protection Switching) configurations and provides uninterrupted monitoring access.

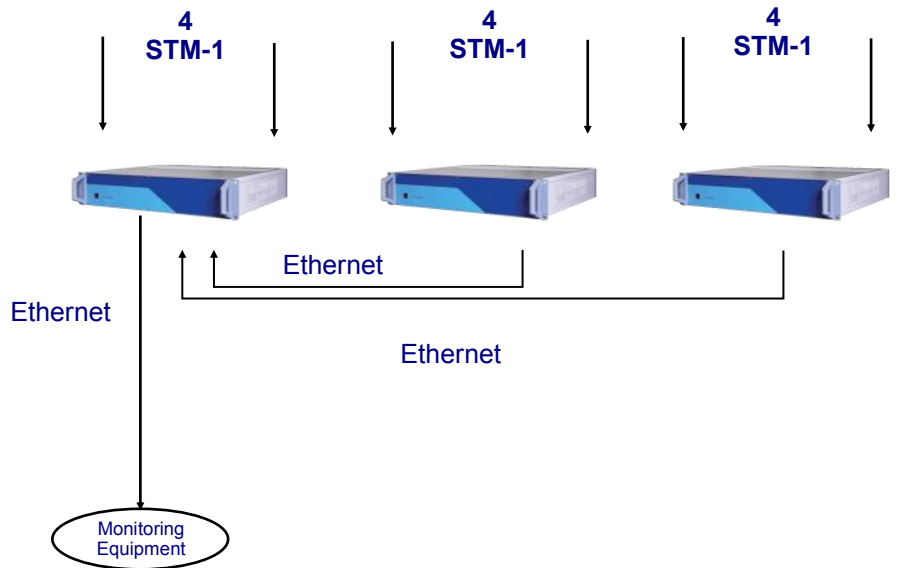
If one or more active links are falling, the Monitoring Equipment continues to receive data from protected link.





## Monitoring multiple STM-1 with one IP Probe

Multiple F-353F can be connected in order to obtain a single aggregated IP output to the probe.



Models	Network Ports		Test Ports	
	# of Bidir STM-1 Inputs	Connectors	# of Ethernet Outputs	Connectors
F-353F-4AS-1G	4 x STM-1	SFP	1 or 2 GE	SFP

## Main Characteristics

**Power:** - 220/115 Vac, 50/60 Hz Single or Redundant  
- 36/72 Vdc Single or Redundant

**Dimensions:** 483 W x 437 D x 88 mm H

**Weight:** 8 Kg (17,6 pounds)

**UK DISTRIBUTOR**

**TEST & MANAGEMENT DIAGNOSTIC SOLUTIONS**

**FRAME COMMUNICATIONS LTD**

7 Midshires Business Park  
Smeaton Close  
Aylesbury  
Bucks  
HP19 8HL  
UNITED KINGDOM

Tel: +44 (0) 1296 678510

Fax: +44 (0) 1296 436247

WEB: <http://www.frame.co.uk>

Email: [testinfo@frame.co.uk](mailto:testinfo@frame.co.uk)

