

MTP-200X Hand-held High-Performance OTDR

Product Overview

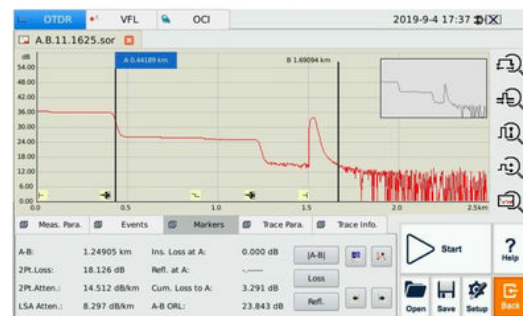
The MTP-200X series is a compact, multi-functional platform featuring an 8-inch high-resolution touch screen, specifically designed for FTTx and WAN applications. It meets all the testing requirements of installers, contractors, and service operators during network installation, construction, maintenance, and troubleshooting. The MTP-200X series supports auto/manual testing, multi-wavelength testing, and multifunctional analysis.



Features

Multi-Function and High Performance OTDR Testing

- Dynamic range up to 50dB
- Short zone: EDZ 0.8m, ADZ 4m
- Auto / manual test and analysis
- Multi-wavelength testing
- Visual fault locator function
- SOR, JPG and PDF file format
- Flexible file naming
- GR-196-CORE (.SOR) file format
- In-line test and through splitter test (1625/1650nm with filter)
- OTDR module up to four wavelengths, SM/MM option
- Fault locating, fibre length/loss/return loss measurement, connector/splice/splitter/macro bend/fibre-end detection



Optimised Platform Performance

- Lightweight, 1.5kg with battery
- 8-inch touch screen
- High strength protect horn
- Excellent Man-Machine interface
- Easy operation
- Optimised power management: 10 hours continuous operation
- Remote/local control by PC (Optional)



High Resolution 8-inch Colour Touch Screen

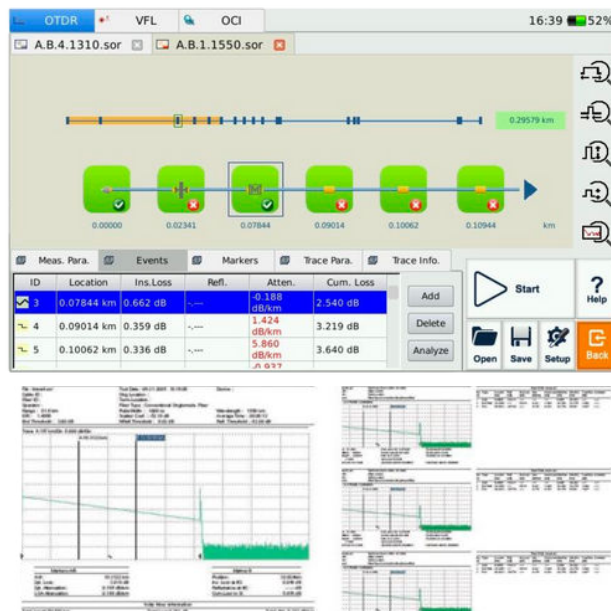
- 8-inch touch screen
- Damp-dust-shock proof
- Quick response, clear display and convenient operation.



Link Image(LM100)- Removing the Complexity from OTDR Testing Meter Module (Optional)

Link Image software helps technicians use an OTDR more effectively, without the need to understand or interpret OTDR results. It converts the graphic data points obtained from traditional single pulse traces into reflective or non-reflective icons which gives users a schematic view of the entire link.

- Icon-based fibre link view of all events
- Automatic pass/fail results
- Eliminates the need for OTDR expertise

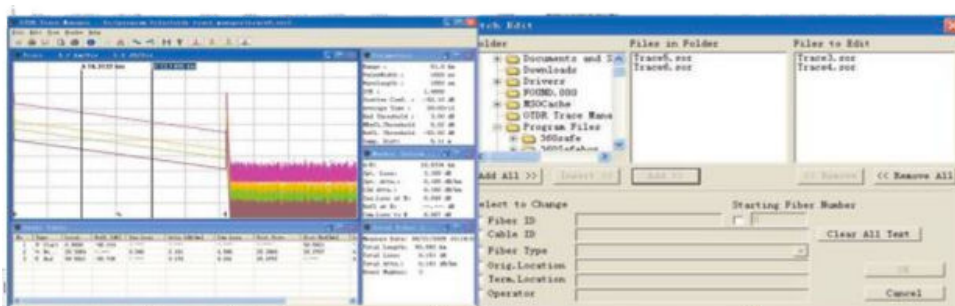


MTP Suite PC Software

- Multi Traces analysis and comparison
- Batch editing and printing
- CSV report formats
- Remote control function (Optional)

Network Remote Control Module (Optional)

- Remote control instrument operation



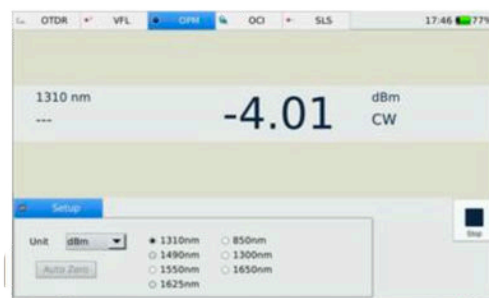
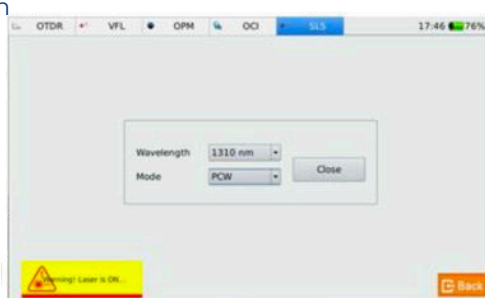
Optical Connector Inspector Module (optional)

- Focusing knob for fast focus
- Eye-safe and clear video viewing
- Interchangeable connector tips



Stabilized Laser Source Module (optional)

- Wavelength same as the OTDR
- High precision and easy operation
- Multi-wavelength Calibration
- High Precision
- Convenient Operation
- FTTH / PON Networks
- Local Area Networks)
- Metropolitan Area Networks (MAN)
- Long Haul Networks



Specifications

MODEL	MTP-200X Series			
Display	8-inch Colour Touch Screen(800x480)			
Connectivity	USB× 2; 10/100Mbit/s RJ-45× 1			
Memory	8GB			
Power Supply	Rechargeable Li-Ion Battery/AC Adapter			
Battery Life	10 hours continuous operation			
Working Temp.	-20° C - 50° C			
Storage Temp.	-40° C - 60° C			
Humidity	0 - 95% (Non-Condensing)			
Weight	1.5kg			
Dimensions (L× W× H)	235× 159× 75mm			
OTDR Module	Wavelength (± 20nm)	Dynamic Range (dB)	EDZ(m)	ADZ(m)
MTP-200X-20VC	1310/1550	38/37	0.8	4
MTP-200X-20VD	1310/1550	45/43	0.8	4
MTP-200X-20VF	1310/1550	50/48	0.8	4
MTP-200X-31VCPL	1310/1550/1625	43/41/40	0.8	4
MTP-200X-33VCPL	1310/1550/1650	42/40/39	0.8	4
MTP-200X-40VC	850/1300/1310/1550	23/28/38/36	1	4.5/4.5/4/4
Selectable Range	SM: 1.3, 2.5, 5, 10, 20, 40, 80, 160, 240Km MM: 1.3, 2.5, 5, 10, 20, 40Km			
Pulse Width	SM: 5ns,10ns, 30ns, 100ns, 300ns,1μ s, 2.5μ s,10μ s, 20μ s MM: 5ns, 10ns, 30ns, 1μ s, 2.5μ s			
Averaging Time	Quick, 15s, 30s, 45s, 60s, 90s, 120s, 180s			
Emitter Type	LD			
Connector	FC/PC (Interchangeable SC, ST and LC)			
Distance Measure Accuracy	± (1m + 10-5× distance + sampling spacing)			
Attenuation Detect Accuracy	± 0.05 dB/dB			
Reflection Detect Accuracy	± 4 dB			
Visual Fault Locator	Output Power: ≥ -3dBm	MOD Frequency: 1Hz	Detecting Range: 5Km	
MC1100 Optical Connector Inspector Module(Optional)				
Field of View	400μ m× 300μ m			
Resolution	≤1.5μ m			
Focusing	Manual Focus			
Microscope Dimensions	Ø32× 175mm			



LS100 Stabilised Laser Source (Optional)

Wavelength ($\pm 20\text{nm}$)	Same as OTDR's
Output Power	$\geq -7\text{dBm}$

PM100 Normal Power Meter Module (Optional)

Calibrated Wavelength	850nm, 1300nm, 1310nm, 1490nm, 1550nm, 1625nm, 1650nm
Measurement Range	$-70\text{dBm} \sim +6\text{dBm}$ ($-60\text{dBm} - +6\text{dBm}$ @ 850nm)
Detector Type	InGaAs
Display Resolution	0.01dB
Accuracy	$\pm 5\% \pm 0.01\text{nW}$ ($\pm 0.5\text{dB}$ @850nm)

Ordering Information

Standard Package includes:

MTP-200X Host, Lithium Battery, CD (Software & User Manual), AC Adapter, Carrying Case, Warranty Card, Calibration Certificate.

Optional Module:

- LS100: Stabilized Laser Source Module (as OTDR)
- PM100: Optical Power Meter Module
- MC100: Optical Connector Inspector Module
- RC100: Remote control Module
- LM100: Link Image Module

