

MTP-200-CWDM Handheld High Performance OTDR

Product Overview

MTP-200-CWDM OTDR supports up to 18 CWDM wavelengths and customised wavelengths, with dynamic range up to 36dB.

Features

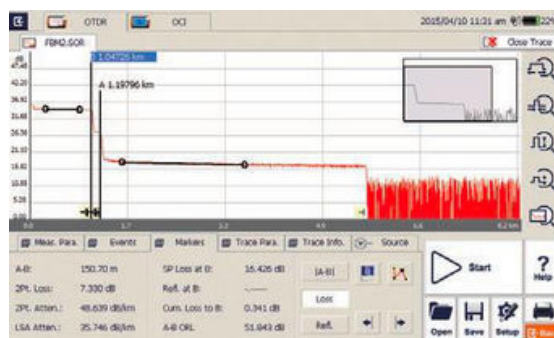
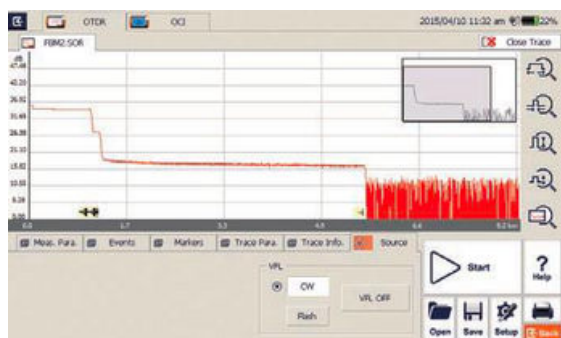
Multi-Function and High Performance OTDR Testing

- Up to 18 CWDM wavelengths, customisable
- Dynamic Range up to 36dB
- Short zone: EDZ 1m, ADZ 4m
- Auto/Manual test and analysis
- Multi-wavelength testing
- Visible laser source function
- Fault locating, fibre length/loss/return loss measurement, connector/ splice/ splitter/ macro bend/fibre-end detection
- GR-196-CORE (.SOR) file format
- SOR and JPG file format
- Flexible file naming
- LinkImage smart graphic analysis



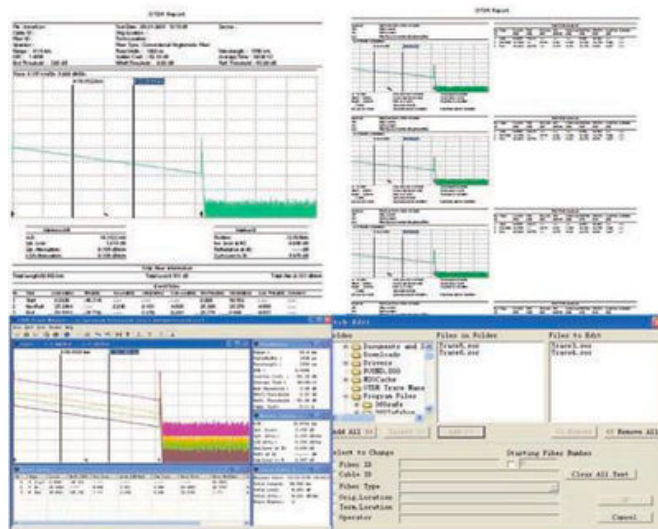
Optimised Platform Performance

- Lightweight, 2.1kg
- 7-inch touch screen
- Windows user interface for easy operation
- Damp-dust-shock proof
- 10 hours of continuous operation
- Supports WiFi/Bluetooth/GPS
- Direct printing function(compatible with PCL printers)
- Remote/local control by PC



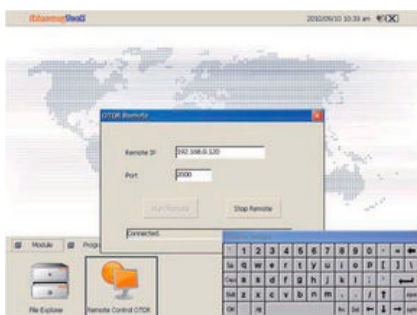
MTP Suite PC Software

- Multi traces analysis
- Single/multi-trace printing in one report
- Batch editing and printing
- Bidirectional traces analysis
- CSV report formats
- Remote control function



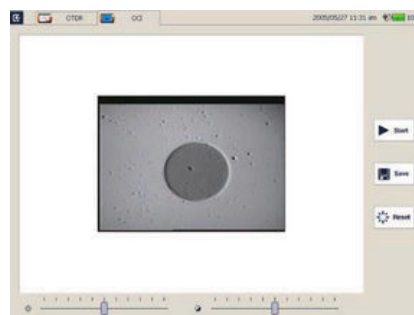
Network Remote Control Module (optional)

- Convenient networking
- Remote control instrument operation



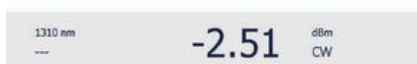
Optical Connector Inspector Module (optional)

- Focusing knob for fast focus
- Eye-safe and clear video viewing
- Interchangeable connector tips



Stabilised Laser Source Module (optional)

- Wavelength same as the OTDR
- High precision and easy operation



Optical Power Meter Module (optional)

- Multi-wavelength Calibration
- High Precision
- Convenient Operation



Applications

- ▶ Installation Stage
- ▶ Service Deployment
- ▶ Maintenance Stage

Specifications

MTP-200 Series	
Display	7 inch TFT Touch Screen (800×480)
Connectivity	USB×2; 10/100Mbit/s RJ-45×1
Memory	2GB
Power Supply	Rechargeable Li-Ion Battery/AC Adapter
Battery Life	10 hours continuous operation
Working Temp.	-20°C - 50°C
Storage Temp.	-40°C - 60°C
Humidity	0 - 95% (Non-Condensing)
Weight	2.1kg
Dimensions (L×W×H)	290×175×75mm
OTDR Module	Wavelength
MTP-200-CWDM-4A	1271/1291/1311/1331
MTP-200-CWDM-4B	1351/1371/1391/1411
MTP-200-CWDM-4C	1351/1411/1431/1451
MTP-200-CWDM-4D	1431/1451/1471/1491
MTP-200-CWDM-4E	1471/1491/1511/1531
MTP-200-CWDM-4F	1511/1531/1551/1571
MTP-200-CWDM-4G	1551/1571/1591/1611
MTP-200-CWDM-8A	1471/1491/1511/1531/1551/1571/1591/1611
MTP-200-CWDM-16	1271/1291/1311/1331/1351/1411/1431/1451/1471/1491/1511/1531/1551/1571/1591/1611
MTP-200-CWDM-18	1271/1291/1311/1331/1351/1371/1391/1411/1431/1451/1471/1491/1511/1531/1551/1571/1591/1611
Dynamic Range(2)	36dB
Dead Zone(3)	EDZ: 1m, ADZ: 4m
Selectable Range	SM: 1.3, 2.5, 5, 10, 20, 40, 80, 160, 240Km
Pulse Width	SM: 5ns,10ns, 30ns, 100ns, 300ns,1μs, 2.5μs,10μs, 20μs
Sampling Points	256000



Averaging Time	Quick, 15s, 30s, 45s, 60s, 90s, 120s, 180s
Connector	FC/PC (Interchangeable SC, ST and LC)
Distance Accuracy	$\pm(0.75m + 5 \times 10^{-5} \times \text{distance} + \text{sampling resolution})$
Attenuation Accuracy	$\pm 0.05 \text{ dB/dB}$
Reflection Accuracy	$\pm 4 \text{ dB}$
Visible Laser Source	Output Power: $\geq -3\text{dBm}$ MOD Frequency: 1Hz Detecting Range: 5Km

MCI100 Optical Connector Inspector Module (Optional)

Field of View	400 μm ×300 μm
Resolution	$\leq 1.5\mu\text{m}$
Focusing	Manual Focus
Microscope	$\varnothing 32 \times 175\text{mm}$
Dimensions	

Specifications LS100 Stabilized Laser Source (Optional)

Wavelength ($\pm 20\text{nm}$)	Same as OTDR's
Output Power	$\geq -7\text{dBm}$

PM100 Normal Power Meter Module (Optional)

Calibrated Wavelength	850nm, 1300nm, 1310nm, 1490nm, 1550nm, 1625nm, 1650nm
Measurement Range	-70dBm - +6dBm (-60dBm - +6dBm @ 850nm)
Detector Type	InGaAs
Display Resolution	0.01dB
Accuracy	$\pm 5\% \pm 0.01\text{mW}$ ($\pm 0.5\text{dB}@850\text{nm}$)

*Specifications subject to change without notice

Notes

- (1) Wavelength is open for customisation
- (2) Dynamic range measurement at 20 μs pulse width and 180s averaging time;
- (3) Dead Zone measurement at 0.6Km and reflection $< -45\text{dB}$; EDZ measurement at 5ns, ADZ measurement at 10ns.

Ordering Information

Standard Package:

MTP-200 Host, Lithium Battery, CD, Software, Data Cable, Carrying Case, Warranty card, Calibration Certificate

Optional Module:

LS100: Stabilised Laser Source Module (as OTDR), PM100: Optical Power Meter Module ,MCI100: Optical Connector Inspector Module, RC100: Remote control Module, LM100: Link Image Module

