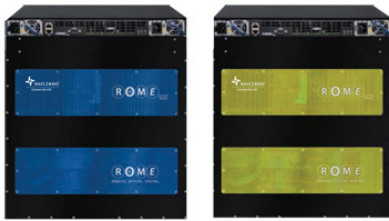


ROME® - Robotic Optical Management Engine

ROME™
128

ROME™
500

ROME™
64



Multi-mode

Single Mode



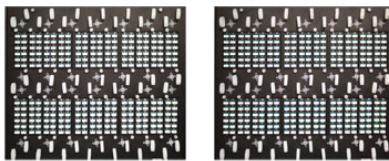
Multi-mode

Single Mode

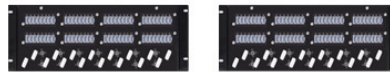


Multi-mode

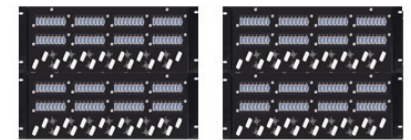
Single Mode



256 LC Duplex



64 MPO



128 MPO

ROME™₂₅₀ is a single matrix version of the ROME 500

Overview

ROME® is a robotic optical switch that offers dynamic fiber cross connect capability at layer-0. ROME® enables physical fiber connections to be made automatically, remotely, quickly, and without on-site manual intervention. ROME® delivers superior optical performance and low insertion loss. ROME® is completely transparent to transport protocols, wavelengths and signal rates.

With ROME®, data center, telco & lab operators benefit from reduced CAPEX and OPEX as well as improved reliability and security, while future-proofing their critical infrastructure.

Features & Benefits

- Automated Fiber Patch Panel
- Remotely Re-Configurable
- Single Mode or Multi-mode Fiber
- No Electronic Latency
- All Optical - Low Optical Loss
- CLI & GUI Interface
- Robotic Precision
- Bitrate & Wavelength Independent
- Patented Mechanical Latching Technology
- Redundant, Hot-Swappable Power Supply

Applications

- Data Center Architecture
- Lab Automation
- Central Office / Remote Site Management
- FTTx - Remote Provisioning, Testing, Troubleshooting, and Grooming
- Co-Location / Carrier Hotel

Specifications	ROME® 500	ROME® 64Q	ROME® 128Q
Optical Characteristics			
Fiber	512 Fibers	512 Fibers	1,024 Fibers
Configurations	<ul style="list-style-type: none"> • Duplex Tandem Any to Any • Duplex Any East to Any West • Simplex Tandem Any East to Any West 	8 Fiber Any to Any	8 Fiber Any to Any
Fiber Type	Single Mode SMF-28e, Multi-mode OM4		
Patch Panel Interface	LC PC/UPC Duplex	MPO	
Insertion Loss	1.0 dB Max (0.5 dB Typical) Patch panel to patch panel		
Return Loss	Single Mode -50 dB UPC, -60 dB APC		
	Multi-mode -25 dB		
Switching Time	15 sec (Typical)		
Power Requirements			
Power Supply Options	AC+AC, DC+DC, or AC+DC Hot Swappable		
LCU Power Input	100-240 V; 50/60 Hz 4A per PSU, -48/-60 Vdc; 8A per PSU		
Power Consumption	55W Standby	150W (180W Peak) While Switching	
Environmental Conditions			
Temperature Range (operating)	0 °C to 40 °C (32 °F to 104 °F)		
Temperature Range (storage)	-40 °C to 70 °C (-40 °F to 158 °F)		
Relative Humidity (non-condensing)	5% to 95%		
Mechanical Specifications for Main Chassis			
Rack Unit	19" -10RU		
Dimensions	17.4" (442mm) Width, 17.5" (443mm) Height, 31" (791mm) Depth		
Mounting Depth	29" (737mm) to 36" (915mm)		
Weight	211 lbs (95kg)		
Patch Panel	9RU back to back with main chassis in 36" mounting depth		
Mechanical Specifications for Logical Control Unit (LCU)			
Rack Unit	19" -1RU		
Dimensions	17.5" (444mm) Width, 1.7" (44mm) Height, 27.5" (698mm) Depth		
Mounting Rail Distance	29" (737mm) to 36" (915mm)		
Weight	24 lbs (11kg)		
Shipping Specifications			
Dimensions	L40" x W24" x H46"		
Gross Weight	300 lbs (136kg)	344 lbs (156kg) with Sliders	
Network Interfaces			
Ethernet: RJ45, Console: RJ45 and DB9			
Safety Compliance		EMC Compliance	
<ul style="list-style-type: none"> • ANSI/UL 60950-1 / CSA 60950-1 (USA / Canada) • EN60950-1 (Europe) • IEC60950-1 (International), CB Certificate & Report Including All Group and Country Deviations • Low Voltage Directive 2006/95/CE (Europe) 		<ul style="list-style-type: none"> • FCC /ICES-003 - Emissions (USA / Canada) • CISPR 22/32 - Emissions (International) • EN55022/32 - Emissions (Europe) • EN55024 - Immunity (Europe) • EN 300 386 - Emissions & Immunity (Europe) • EN61000-3-2 - Harmonics (Europe) • EN61000-3-3 - Voltage Flicker (Europe) • EMC Directive 2004/108/EC (Europe) 	
Additional Compliances			
<ul style="list-style-type: none"> • CE Declaration of Conformity (Europe) • FCC/ICES-003 Class A Verification Report (USA / Canada) • RoHS Compliant • Reach Compliant • In Process of Conflict Minerals Certification 			