

ShinewayTech®

DWDM OTDR with Tunable Laser



Hand-held High Performance OTDR

MTP-200-D100

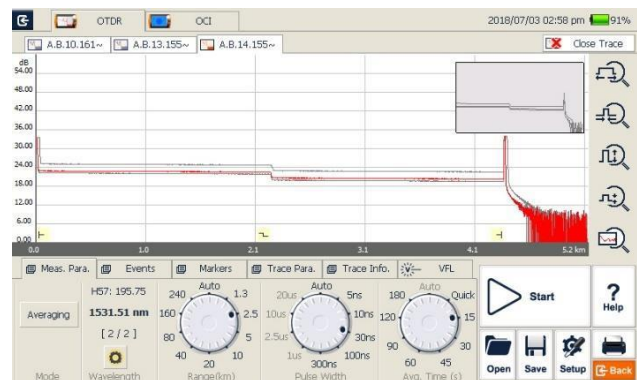
Series

Multi-Function and High Performance OTDR Testing

- 96 C-band wavelengths
- Dynamic range up to 38dB
- Short zone: EDZ 1m, ADZ 4m
- Tunable laser source with 50GHz spacing
- Auto/manual test and analysis
- Multi-wavelength testing
- Visible laser source function
- Fault locating, fiber length/loss/return loss measurement, connector/ splice/ splitter/ macro bend/fiber-end detection
- GR-196-CORE (.SOR) file format
- SOR and JPG file format
- Flexible file naming
- LinkImage smart graphic analysis

Optimized Platform Performance

- Lightweight, 2.1kg
- 7 inch touch screen
- Windows user interface for easy operation
- Damp-dust-shock proof
- 10 hours continuous operation
- Supports WiFi / Bluetooth / GPS
- Direct printing function(compatible with PCL printers)
- Remote/local control by PC



MTP Suite PC Software

- Multi traces analysis
- Single/multi traces printing in one report
- Batch editing and printing
- Bidirectional traces analysis
- CSV report formats
- Remote control function



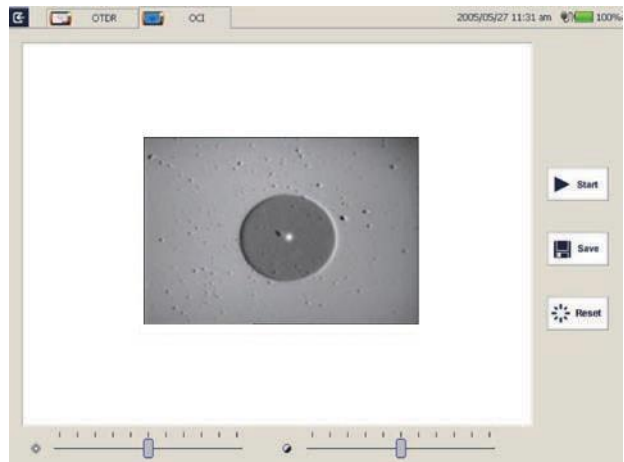
Network Remote Control Module (Optional)

- Convenient networking
- Remote control instrument operation



Optical Connector Inspector Module (Optional)

- Focusing knob for fast focus
- Eye-safe and clear video viewing
- Interchangeable connector tips



Optical Power Meter Module (Optional)

- Multi-wavelength Calibration
- High Precision
- Convenient Operation



Applications

- DWDM network fiber characterization
- DWDM live testing
- Verification of ROADM channel routing
- Test through OADM and MUX/DMUX

Specifications

MTP-200 Series	
Display	7 inch TFT Touch Screen (800×480)
Connectivity	USB×2; 10/100Mbit/s RJ-45×1
Memory	2GB
Power Supply	Rechargeable Li-Ion Battery/AC Adapter
Battery Life	10 hours continuous operation
Working Temp.	-20°C - 50°C
Storage Temp.	-40°C - 60°C
Humidity	0 - 95% (Non-Condensing)
Weight	2.1kg
Dimensions (L×W×H)	290×175×75mm

OTDR Module	Wavelength		
MTP-200-D100	1528.77-1566.72nm @ 0.4nm Spacing		
Dynamic Range ⁽¹⁾	38dB		
Dead Zone ⁽²⁾	EDZ: 1m, ADZ: 4m		
Selectable Range	SM: 1.3, 2.5, 5, 10, 20, 40, 80, 160, 240Km		
Pulse Width	SM: 5ns, 10ns, 30ns, 100ns, 300ns, 1μs, 2.5μs, 10μs, 20μs		
Sampling Points	256000		
Averaging Time	Quick, 15s, 30s, 45s, 60s, 90s, 120s, 180s		
Connector	FC/PC (Interchangeable SC, ST and LC)		
Distance Accuracy	±(1m + 5×10 ⁻⁵ × distance + sampling resolution)		
Attenuation Accuracy	±0.05 dB/dB		
Reflection Accuracy	±4 dB		
Visible Laser Source	Output Power: ≥-3dBm	MOD Frequency: 1Hz	Detecting Range: 5Km

Tunable Laser Source	
Frequency Range	191 - 196 THz
Wavelength Range	1528-1566nm
Accuracy	2.5 GHz
Line Width	10 MHz
SMSR	40 dB
Output Power Range	+9 dBm to +13 dBm (C Band)
Power Setting Resolution	0.01 dB
Power Variation over Wavelength Range	±0.5 dB
Minimum Channel Spacing	50 GHz (0.4nm)
Reflection Accuracy	±4 dB
Relative Intensity Noise	-140 dB/Hz

MCI100 Optical Connector Inspector Module (Optional)	
Field of View	400μm×300μm
Resolution	≤1.5μm
Focusing	Manual Focus
Microscope Dimensions	Ø32×175mm

PM100 Normal Power Meter Module (Optional)	
Calibrated Wavelength	850nm, 1300nm, 1310nm, 1490nm, 1550nm, 1625nm, 1650nm
Measurement Range	-70dBm - +6dBm (-60dBm - +6dBm @ 850nm)
Detector Type	InGaAs
Display Resolution	0.01dB
Accuracy	± 5% ± 0.01nW (±0.5dB@850nm)

*Specifications subject to change without notice

Notes

- (1) Dynamic range measurement at 20µs pulse width and 180s averaging time;
- (2) Dead Zone measurement at 0.6Km and reflection <-45dB; EDZ measurement at 5ns, ADZ measurement at 10ns.

Order Information:

Standard Package

MTP-200, Lithium Battery, CD (User's Manual and MTP Suite Software), Carrying Case, Warranty card, Calibration Certificate

Optional Modules:

- PM100: Optical Power Meter Module
- MCI100: Optical Connector Inspector Module
- RC100: Remote control Module
- LM100: Link Image Module

