

+ PRODUCT FEATURES

- + Ultra-compact and discreet design
- + IP68 certified for underground and aerial use
- + UV-resistant for enhanced durability
- + Perfect sealing with high-quality silicone gel
- + Easy installation: no accessories required for anchoring cables

DESCRIPTION

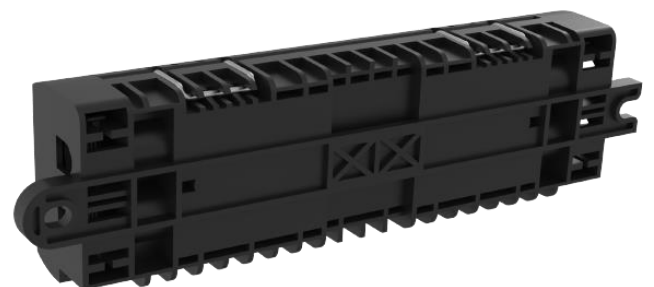
Introducing the IP68 Transition Box: **Your Ultimate FTTH Network Solution!**

The IP68 Transition Box is a game-changer designed for installation **in manholes or on poles**. It's your go-to solution for **connecting** or **maintaining** FTTH networks.

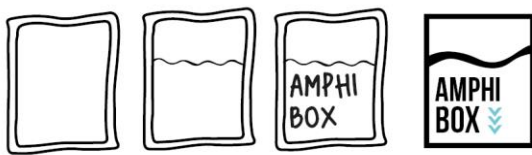
This versatile box handles **external to internal** cable transitions, property **demarcation**, cable **repairs**, **extensions**, and network burial with **ease**.

With the capacity to manage **two cables** on each side and **splice four optical fibres**, the IP68 Transition Box ensures **seamless** and **reliable** connectivity, making it an indispensable tool for modern fibre optical networks.

Get ready to experience a new level of efficiency and performance with this robust and practical solution.



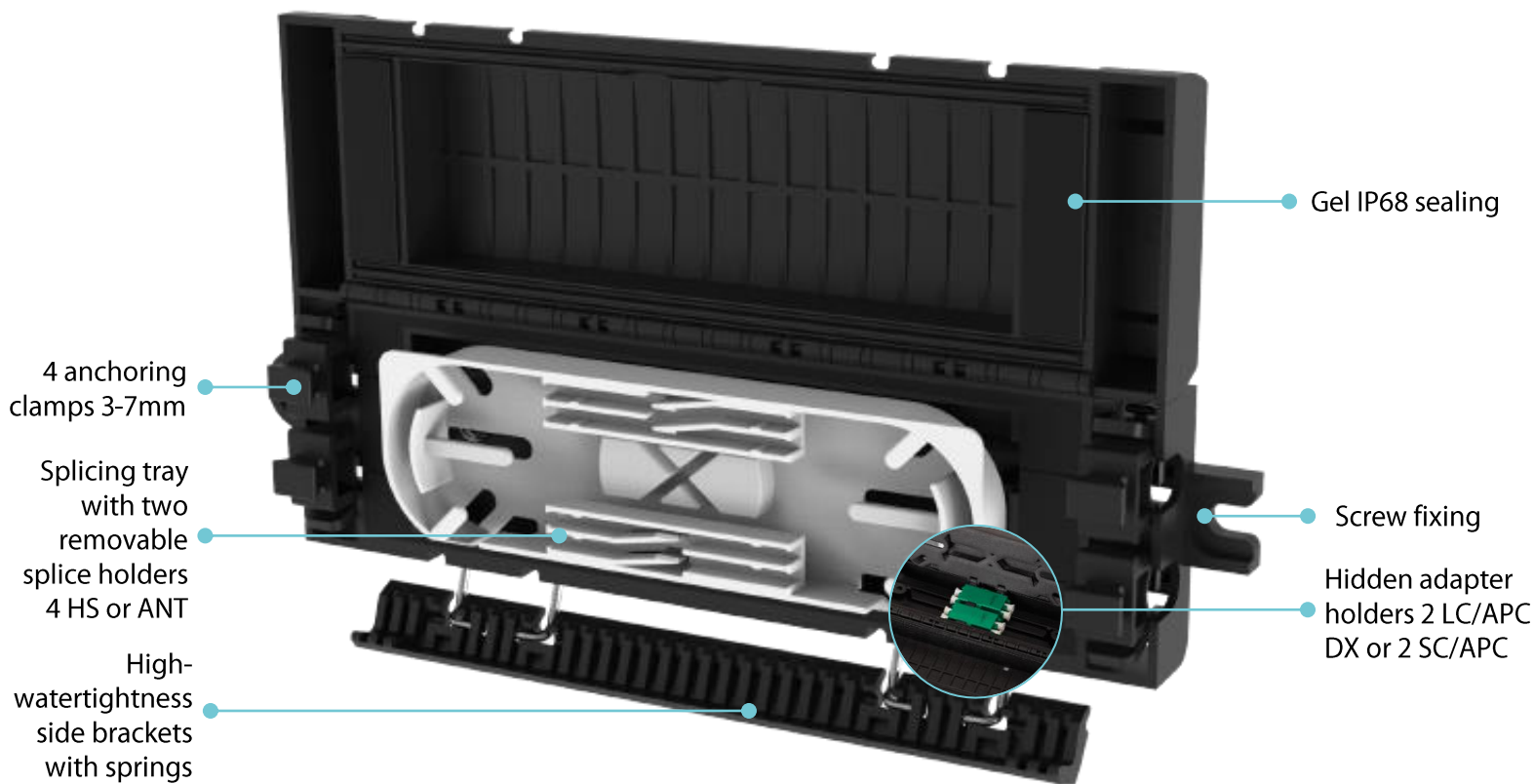
In order to better serve its customers and to improve the performance of its products, OMELCOM reserves the right to modify the present characteristics without prior notice



TRANSITION BOX

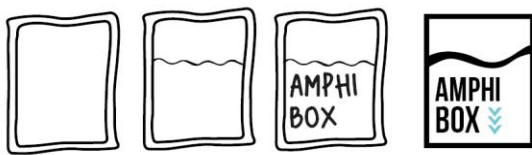
AERIAL & UNDERGROUND AMPHIBOX NANO

DESIGN DETAILS



Dimensions: 184 x 48.5 x 29.5 mm

In order to better serve its customers and to improve the performance of its products, OMELCOM reserves the right to modify the present characteristics without prior notice



DETAILS

Features	Performances	Standard references
Dimensions	184 x 48.5 x 29.5 mm	
Material	PC compound	
IP - IK	IP68 IK08	EN 60529 EN 62262
Color	Black UV resistant	ISO 11664-4 ISO 4892-2 / -3
Fixing	By screw on wall By metal strap on pole	
Anchoring	4 anchoring clamps	
Cable input	4 entry ports diameter 3 to 7 mm Singlemode G.657.A2	IEC 60793-2-50
Retention	10D with clips 15D with clips + cable ties	EN 61300-2-4
Capacity	4 removable heat-shrink splice holders from 30 mm to 45 mm diameters 2.3 to 2.6 mm after shrinking or 4 crimp-splice protectors (ANT)	
Connections	2 LC/APC DX or 2 SC/APC adapters	

PACKING DETAILS

Part number	Description	ID	Parts per box	Parts per pallet
CO400	AMPHIBOX NANO IP68 UNLOADED	T2	Inner box 1:10 Master box 2: 240	2160
CO401	AMPHIBOX NANO IP68 2 SCAPC	T2	Inner box 1:10 Master box 2: 240	2160
CO402	AMPHIBOX NANO IP68 2LCAPC DX	T2	Inner box 1:10 Master box 2: 240	2160

In order to better serve its customers and to improve the performance of its products, OMELCOM reserves the right to modify the present characteristics without prior notice