



# Utel Monitoring

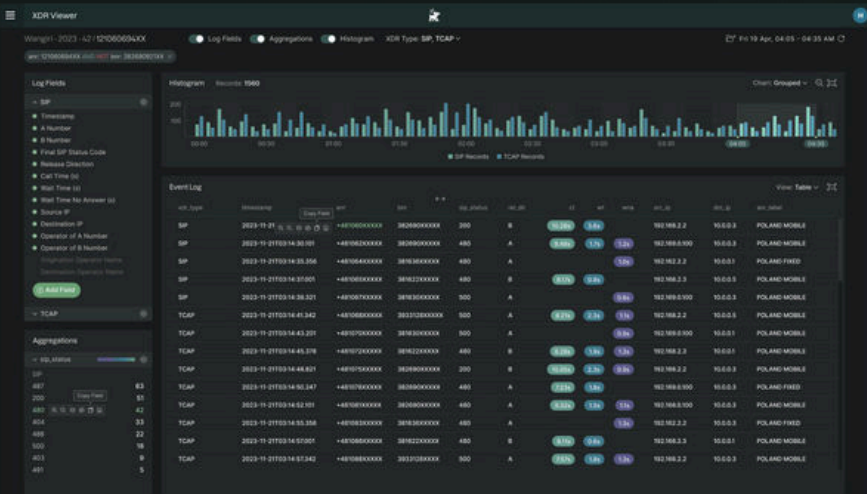
Proactive Insight, Reliable Monitoring, Seamless Operations





# Utel Quality: Your Partner in Network Monitoring

Telecom operators face increasing challenges in managing complex networks, maintaining performance, and ensuring service reliability. Utel Monitoring provides a comprehensive solution to alleviate these pains while delivering measurable gains.





## Key Challenges

- Lack of real-time visibility into network performance across mobile, fixed, and legacy technologies.
- Delayed troubleshooting due to limited access to historical data and inadequate tracing tools
- Inefficiencies in managing data labeling and integration with existing systems
- Inability to scale and adapt to modern deployment models like cloud-based or virtualized infrastructure

## Our Promise

- **24/7/365 Monitoring**  
Always-on insights to prevent outages and maintain optimal service
- **Fast Troubleshooting**  
Real-time tracing and drill-down capabilities to quickly identify and resolve issues
- **Actionable Insights**  
Historical data searches and enriched, labeled records for informed decision-making
- **Seamless Integration**  
Data lake with robust APIs for interoperability with third-party systems
- **Future-Ready Deployments**  
Flexible deployment options for bare-metal, virtualized, or cloud-based infrastructures



## Key Features

- **Comprehensive Coverage**  
Supports mobile (2G, 3G, 4G, 5G), fixed, and legacy networks to ensure broad applicability
- **Real-time tracing Tools**  
Quickly identify and resolve performance issues with intuitive troubleshooting features
- **Historical Data Search**  
Access and analyze past events to uncover trends or recurring problems
- **Data Enrichment Engine**  
Automate data labeling to enhance insights and operational efficiency
- **Open Data Access**  
APIs for seamless integration with third-party platforms and analytics tools
- **Flexible Deployment**  
Tailored to your infrastructure—bare-metal, virtualized, or cloud-ready



# Utel Suite

Utel Monitoring is part of the comprehensive Utel Suite of solutions, designed for Network Monitoring, Quality Assurance and Fraud Management. Together, they provide a holistic approach to ensuring network reliability, operational efficiency, and financial protection. Whether monitoring your telecom network, ensuring service quality, or managing fraud, the Utel Suite equips you with the tools needed to secure your revenue streams and maintain a competitive edge.



**UTEL DEFENSE**  
Fraud Management System



**UTEL MONITORING**  
Network Monitoring System



**UTEL QUALITY**  
Data Analytics & Viz



**UTEL APIs**



**UTEL ENGINE**  
Data Capture & Processing


## Take Action Today


Elevate your network performance and operational efficiency with Utel Monitoring.


Contact us today to learn more about how our solution can deliver unparalleled insights, streamline troubleshooting, and ensure seamless network operations.

Let Utel Monitoring be your trusted partner in achieving 24/7/365 network reliability.

**Frame Communications** is the authorised partner of Utel in the UK and Ireland. Contact us to know more.

 +44 (0) 1638 311650

 [sales@frame.co.uk](mailto:sales@frame.co.uk)

 [frame.co.uk](http://frame.co.uk)

