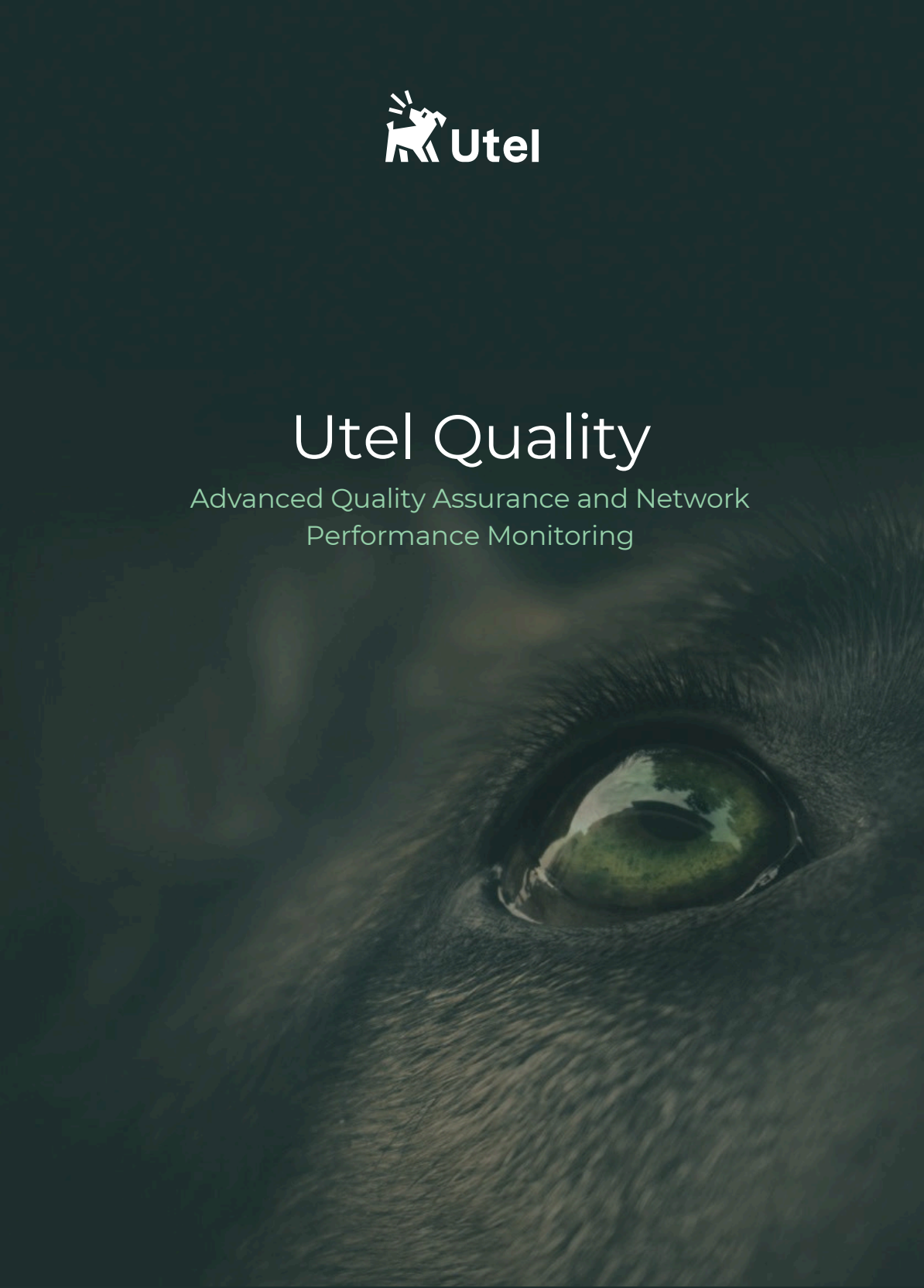




Utel Quality

Advanced Quality Assurance and Network
Performance Monitoring

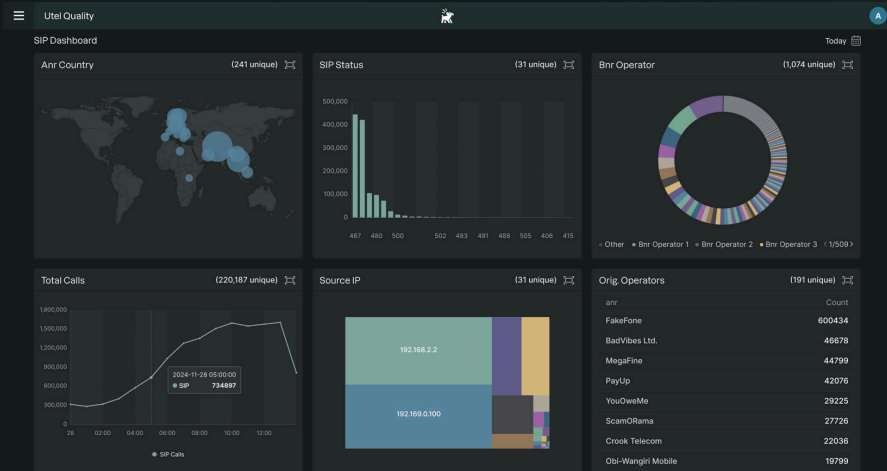




Utel Quality: Your Partner in Quality Assurance and Network Performance

In today's fast-paced telecom environment, ensuring superior quality assurance is more critical than ever. At Utel, we understand the challenges you face in analyzing complex data, visualizing performance insights, and maintaining high service standards.

Utel Quality is designed to empower you to streamline decision-making and optimize network performance with cutting-edge tools for data analytics and visualization, enabling you to deliver exceptional service quality and customer satisfaction.





Why Choose Utel Quality?

- Tailored and Modular Design
Customize the solution to your needs, either as a complete system or individual components enhancing existing infrastructure
- Comprehensive Insights
Benefit from dynamic dashboards, drill-down capabilities, and near real-time monitoring for faster insights and troubleshooting
- Flexible Deployment Options
Deploy on bare-metal, virtualized, or cloud-based environments, ensuring seamless integration with your preferred infrastructure
- Future-Proof Technology
Stay ahead with support for emerging standards and a design independent of third-party platforms, ensuring full control and scalability
- Decades of Expertise
Backed by Utel's trusted telecom and software experience, the solution ensures reliability, innovation, and exceptional customer support





Standard Deliverables

- Performance Monitoring in near Real-Time
Continuous insights into network performance to ensure peak efficiency
- Pre-Configured Dashboards for MNOs
Out-of-the-box dashboards to get started immediately
- Dynamic and Adjustable Dashboards
Tailor your view with adjustable widgets and dashboards built to fit your operational needs
- Drill-Down Capabilities
Quickly navigate from high-level KPI dashboards into individual data records (XDRs) for deeper insights and efficient troubleshooting
- Automatic Alerts
Stay informed with proactive notifications to keep your network running smoothly

Premium Deliverables

- Corporate Portal for B2B Access
Provide business partners with seamless access to dashboards and detailed data records
- Corporate Portal with Drill-Down Capabilities
Quickly navigate from high-level KPI dashboards into individual data records (XDRs) for deeper insights and efficient troubleshooting
- Support for New Technologies
Stay ahead with comprehensive support for emerging technologies like 5G
- APIs for Third-Party Integration
Seamless interoperability with external systems via modern APIs
- AI-Powered Anomaly Detection (coming)
Proactive quality management with artificial intelligence



Utel Suite

Utel Quality is part of the comprehensive Utel Suite of solutions, designed for Network Monitoring, Quality Assurance and Fraud Management. It provides a holistic approach to securing your revenue stream and preventing revenue leakage, while ensuring both operational efficiency and financial protection.



UTEL DEFENSE
Fraud Management
System



UTEL MONITORING
Network Monitoring
System



UTEL QUALITY
Data Analytics & Viz



UTEL APIs




UTEL ENGINE
Data Capture & Processing


Take Action Today

Elevate your data analytics and visualization capabilities with Utel Quality. Contact us to learn more about how our solution can provide unparalleled insights and ensure superior quality assurance for your organization.

Frame Communications is the authorised partner of Utel in the UK and Ireland. Contact us to know more.

 +44 (0) 1638 311650

 sales@frame.co.uk

 frame.co.uk

