

AirMapper™ Site Survey

Wi-Fi and Bluetooth site surveys in the palm of your hand – no laptop, no dongle, and no tethered device.



Now with
Wi-Fi 6/6E!

Overview

Introducing the **AirMapper™ Site Survey** app for both the the AirCheck G3 Wi-Fi 6 Wireless Analyzer, EtherScope nXG Portable Network Expert, and CyberScope Handheld Cybersecurity Analyzer.

With AirMapper, users of these portable tools can quickly and easily gather location-based Wi-Fi and Bluetooth measurements and create visual heat maps of key performance metrics in Link-Live or AirMagnet® Survey PRO*.

The AirMapper app is ideal for quick site surveys of new deployments, change validation, and performance verification.

- Complete faster and easier Wi-Fi and Bluetooth site surveys with an entirely mobile platform (that also includes in-depth analysis tools).
- Perform enterprise-grade active or passive surveys without the need of a dongle or tethered device.
- Perform professional SNR and noise measurements with an easy-to-use handheld instrument.
- Examine real-world coverage and gain insight into user experience to avoid performance complaints and costly Wi-Fi network re-design—See what the user is experiencing at that moment!
- Automatically identify common Wi-Fi network problems using the InSites intelligence in Link-Live.
- Collaborate—Easily share and visualize survey data through the Link-Live collaboration, reporting, and analysis platform.

AirMapper Site Survey on AirCheck G3, EtherScope nXG, or CyberScope provides accurate and complete heat maps by measuring Wi-Fi and Bluetooth performance from the perspective of other mobile devices. Users can map RF signal coverage and visualize Wi-Fi and Bluetooth network performance at every location on the floor. The ease and portability of this solution enables technicians to quickly troubleshoot or validate Wi-Fi and Bluetooth networks by measuring the real-world experience of mobile device users.

With Link-Live or AirMagnet Survey PRO creating powerful visualizations of the recorded data, centralized engineers can analyze test results from far-flung remote sites without travel.



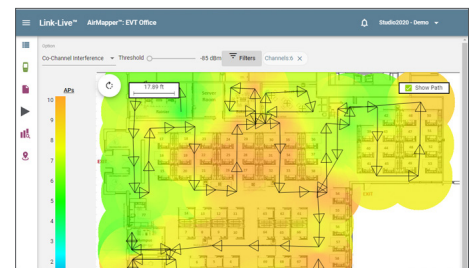
No Laptop



No Dongle



No Tethered Device



Share and visualize survey data through Link-Live



Key Features*

- Measure Signal Coverage, SNR, AP Coverage, Adjacent and Co-Channel Interference, Tx/Rx Rates and more
- Identify Wi-Fi Access Point and BLE Beacon Configurations and Properties
- Validate Wi-Fi and Bluetooth Networks from Mobile Device User Point-of-View
- Upload and Visualize Survey Results in Link-Live or AirMagnet Survey PRO

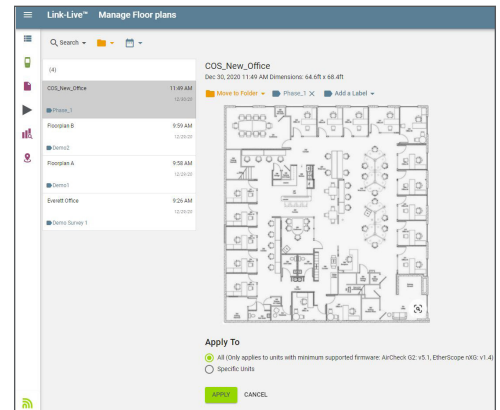
*Active AllyCare Premium Support is required for in-depth AirMapper visualizations and filtering, automatic problem identification via InSites™ intelligence, detailed topology map controls, and advanced reporting options in Link-Live.

Simplified Project Management and Collaboration

The AirMapper Ecosystem supports the creation and calibration of floorplans in Link-Live. Once created, the floorplan(s) can be automatically sent to any of the AirMapper collectors (AirCheck G3, EtherScope nXG, and CyberScope units) in the user's organization.

Comprehensive Wi-Fi Surveys, Passive, and Active

AirMapper supports both passive and active surveys. Different from passive surveys, active surveys allow you to perform a site survey while being actively connected to a Wi-Fi network. Active surveys are commonly used to validate Wi-Fi network performance and roaming. With their dual radios, both AAirCheck G3, EtherScope nXG, and CyberScope enable simultaneous passive and active surveys to gather critical site metrics and validate end-user device experience and roaming on a single walk through.



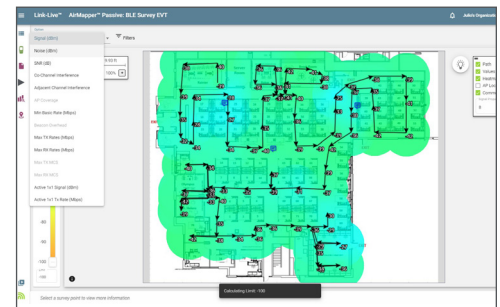
Manage floorplans in Link-Live

Bluetooth Site Surveys

Using the AirMapper Site Survey app, users can perform passive Bluetooth and BLE surveys, making it easier to validate coverage when using Bluetooth for "Real Time Location" (RTLS) or identify and locate Bluetooth devices in the area.

Address	RSSI	Name	Company Name	Company ID	Device Type	TX Power	Edystone Namespace	Edystone Instance	URL	Bluetooth UUID	Bluetooth MajorID	Bluetooth MinorID	Advertisement	Flags
003316-00020c	-64	EV74	--	--	Edystone UID	-18	0x426c75655c	0x00000000	--	--	--	--	General Discoverable	Edr not Supported
003316-00020c	-71	EV74	Apple, Inc.	76	iBeacon	-59	--	--	--	426c7565-43	3838	4949	General Discoverable	Edr not Supported
003316-00020c	-64	EV74	--	--	Unknown	--	--	--	--	--	--	--	General Discoverable	Edr not Supported
003316-00020c	-68	EV74	--	--	Edystone URL	-18	--	--	https://www.bluelc...	--	--	--	General Discoverable	Edr not Supported
003316-000389	-74	EV73	--	--	Edystone URL	-18	--	--	https://www.bluelc...	--	--	--	General Discoverable	Edr not Supported
003316-000389	-71	EV73	Apple, Inc.	76	iBeacon	-59	--	--	--	426c7565-43	3838	4949	General Discoverable	Edr not Supported
003316-000389	-76	EV73	--	--	Edystone UID	-18	0x426c75655c	0x00000000	--	--	--	--	General Discoverable	Edr not Supported

Bluetooth and BLE device information



Bluetooth and BLE metrics that can be used to identify coverage and configuration problems.

Automatic Problem Detection

The AirMapper Site Survey app makes it easy for anyone to quickly identify Wi-Fi network problems using the InSites intelligence in Link-Live. InSites simplifies the process of Wi-Fi network troubleshooting by automatically comparing the AirMapper Site Survey data collected on-site to a set of pre-defined thresholds, providing a visual Pass or Fail indication on the heatmap.

Access Point Location

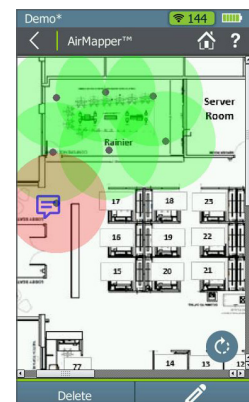
The AirMapper app simplifies the process of validating new installations or locating rogue devices by automatically triangulating the position of Access Points on a floor plan through the use of Link-Live.



Access point location and automatic problem area identification

Ensure Complete Record Keeping

Add Comments on Floor Plan – you can document network issues and changes while performing a site survey. AirMapper allows you to add comments anywhere on the floor plan to record observations or notes, which will be visible on both Link-Live or AirMagnet Survey PRO along with the survey measurements.



Add comments on floor plans

Comprehensive Visualizations Speed Validation and Troubleshooting

Link-Live and AirMapper Survey PRO feature a complete set of pre-configured visualizations to help you ensure coverage, connectivity, and performance. Adjusting threshold values indicates areas where measured metrics fail to meet network requirements. The “auto-scale” feature in Link-Live provides more granularity and instant visibility in variations of key Wi-Fi metrics.

Pre-configured heatmaps:

- Signal (dBm)
- Noise (dBm), SNR (dB)
- Co-Channel Interference
- Adjacent Channel Interference
- AP Coverage
- Min Basic Rate (Mbps)
- Beacon Overhead
- Max Tx, Max Rx Rates (Mbps)
- Max, Min MCS

Simplified Wi-Fi Design Validation

AirMapper allows you to quickly and easily validate Wi-Fi designs created with AirMagnet Survey PRO. Import your AirMapper project into AirMagnet Survey PRO and use the available tool set to compare your design to the data collected with AirMapper.

**Active AllyCare Premium Support required for in-depth AirMapper visualizations and filtering, automatic problem identification via InSites™ intelligence, detailed topology map controls, and advanced reporting options in Link-Live.*



Powerful visualizations for critical Wi-Fi and Bluetooth metrics



Automatic problem detection with the InSites intelligence

Premium Support Services



Enhanced site survey visualizations and filtering are available to customers with AllyCare Premium support on their AirCheck G3, EtherScope nXG, and CyberScope. AllyCare is a comprehensive support and maintenance service for NetAlly's Network Tools and AirMagnet® software that offers significant value over standard warranty. Membership of AllyCare can be purchased at a 1-year, 2-year, or 3-year membership rate. To learn more visit: netally.com/allycare-support

netally.com/products/airmapper-site-survey