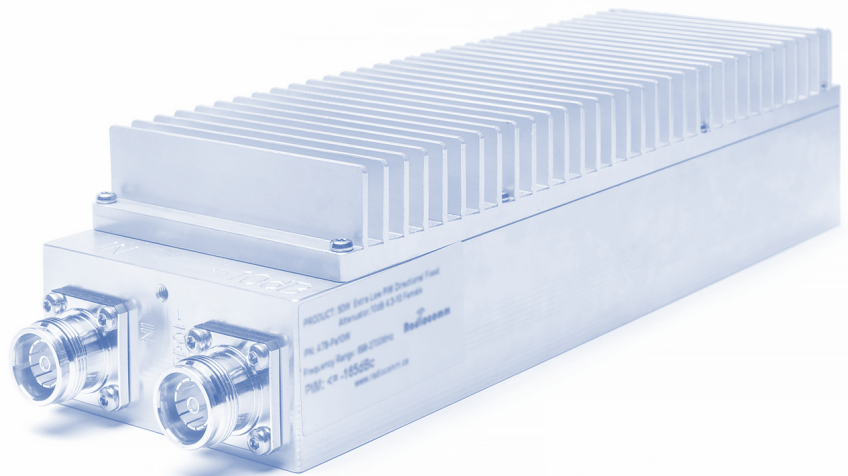


# Passive Network Components

Product Overview 2025



Low PIM Everything.



## Acentury Radiocomm – trusted globally

Radiocomm provides a comprehensive selection of RF passive components, RF cables, cryogenic cables, and fiber cables. Our products are used for laboratory and field applications across several industries including telecommunications, network equipment vendors, aerospace, cable multi-service operators, and high tech.



*“Your team is innovative, customer first and very responsive.”*

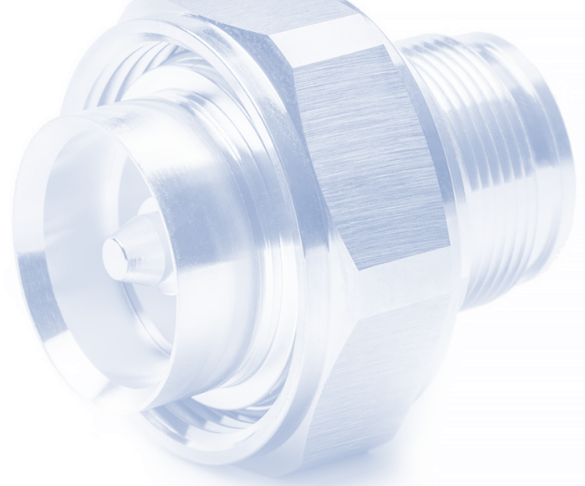
- Rated by our Tier 1 Carrier Customers

## Table of Contents

Adapters .....	4
Attenuators .....	5
RF Filters .....	6
Phase Stable RF Jumper Cables .....	7
Low PIM Coaxial Jumper Cables .....	8
Low PIM Hybrid Coupler/Combiner .....	9
Low PIM Couplers .....	10
RF Splitters .....	11
RF Signal Tappers .....	12
Termination Loads .....	13
Multi-plexers .....	14



Low PIM Everything.



# RF Adapters

Radiocomm RF adapters are designed for wireless applications requiring consistent electrical performance and low return loss. Radiocomm RF adapters have two categories, extra low PIM and precise adapters, which are available with 1.85mm, 2.4mm, 2.92mm, SMA, Type N, NEX10, 4.3-10 and 7/16 DIN connector interfaces. Frequency range choices include DC-3GHz, DC-6GHz, DC -18GHz, DC-26.5GHz, DC-40GHz and DC-60GHz.

## Types

Low PIM  
Precise

## Connector

DIN Female/Male  
NEX10 Female/Male  
N Female/Male  
4.3-10 Female/Male  
SMA Female/Male  
2.92mm Female/Male  
2.4mm Female/Male  
1.85mm Female/Male

## Power Handling

100W  
200W  
300W

## Application

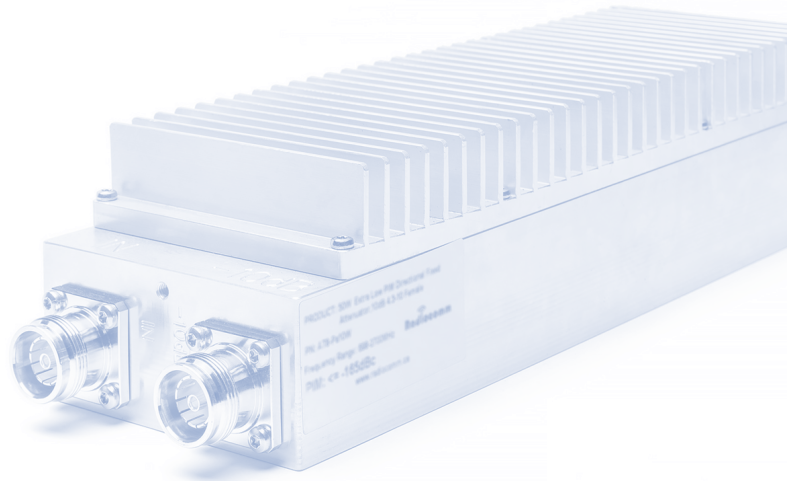
Indoor (IP54)  
Indoor/Outdoor (IP67 / 68)

## Frequency Range

DC-3GHz  
DC-6GHz  
DC-18GHz  
DC-26.5GHz  
DC-40GHz  
DC-50GHz



We are also able to customize products depending on your project's unique needs. Contact us at [info@acentury.co](mailto:info@acentury.co) or fill out a [customization request form](#).



# RF Attenuators

RF attenuators, especially low PIM attenuators, are often used by in-building passive and active DAS systems where stable PIM performance is critical. Radiocomm low PIM attenuator meets -165dBc PIM performance and achieves the heat dissipation specs needed at high RF power. The ultra-wide frequency range (520-6000MHz) covers both public safety and 5G Bands, which allows usage with multiband antennas, leaky cable systems, and in wireless base stations.

## Connector Types

SMA(M/F)  
Type N (M/F)  
NEX10(M/F)  
4.3-10(M/F)  
7/16 DIN(M/F)

## Power Handling

5W, 10W, 25W, 50W,  
100W, 200W

## PIM

Low PIM  
Non-Low PIM

## Attenuation Values

3dB  
5dB  
6dB  
8dB  
10dB  
13dB  
15dB  
20dB  
25dB  
30dB  
35dB

## Frequency Bands

DC-6GHz  
520MHz-6GHz  
2-6GHz  
2-8GHz  
DC-18GHz

## Mounting

Wall/ Pole Mount or Rackmount



We are also able to customize products depending on your project's unique needs. Contact us at [info@acentury.co](mailto:info@acentury.co) or fill out a [customization request form](#).



## RF Filters

Low PIM filters are often used by cellular systems to prevent outband interference. The RF filter, also known as a radio frequency filter, is an electrical component to allow signals of a certain frequency to pass through while attenuating or rejecting signals at other frequencies. These filters are commonly used in wireless communication systems, radar systems, and other RF applications to minimize interference and ensure the proper functioning of the intended signals. RF filters come in various types including low-pass, high-pass, band-pass, and band-stop filters, each serving specific frequency filtering requirements. Radiocomm filters achieve excellent low PIM performance (-165dBc).

Depends on the application, Radiocomm attenuators provide following options.

### Type

Low-pass  
High-pass  
Band-pass  
Band-stop

Passing Band or  
Stopping Band:  
customer defined

Frequency range:  
Customer defined

### Insertion Loss

0.3dB, 0.5dB, 0.8dB, 1dB ,or  
customer defined

Power handling:  
Customer defined

### Connector Type

SMA (F)  
Type N (F)  
NEX10 (F)  
4.3-10 (F)  
7/16 DIN (F)

Outband rejection  
30dB, 0.5dB, 0.8dB, 100dB or  
customer defined

### PIM

Low PIM  
Non-Low PIM



We are also able to customize products depending on your project's unique needs. Contact us at [info@acentury.co](mailto:info@acentury.co) or fill out a [customization request form](#).



# Phase Stable RF Jumper Cables

---

The phase stable RF jumpers cables are often used by wireless labs for RF system or RF performance tests where phase, temperature and amplitude stability performance is critical to ensure accurate test results. Radiocomm phase stable cables are manufactured with high durability, flexible design, and offers customized options for those seeking specific requirements. All cable shipments include factory test result reports.

## Connector Types

1.85mm  
2.4mm  
2.92mm  
SMA  
Type N  
NEX10  
4.3-10

## Frequency Bands

DC-6GHz  
DC-18GHz  
DC-26.5GHz  
DC-40GHz  
DC-50GHz

## Phase Matching Types

per pair, every 4 cables or  
customized

## Temperature Stability

800ppm, 500ppm



We are also able to customize products depending on your project's unique needs. Contact us at [info@acentury.co](mailto:info@acentury.co) or fill out a [customization request form](#).



# Low PIM Coaxial Jumper Cables

---

Low PIM coaxial cables are often used by cellular indoor and outdoor systems where stable PIM performance is critically designed with the highest quality of construction. Radiocomm low PIM cables are manufactured with high durability, flexible design, and offers customized options for those seeking specific requirements. All cable shipments include factory test result reports.

## Cable Types

.086  
.141  
.250  
1/4"  
1/3"  
3/8"  
1/2"

## Frequency Bands

DC-3GHz  
DC-6GHz

## Connector Type

Type N, NEX10, 4.3-10 and 7/16 DIN

## Smokeproof and Fireproof Level

FT4 or FT6 Equivalent

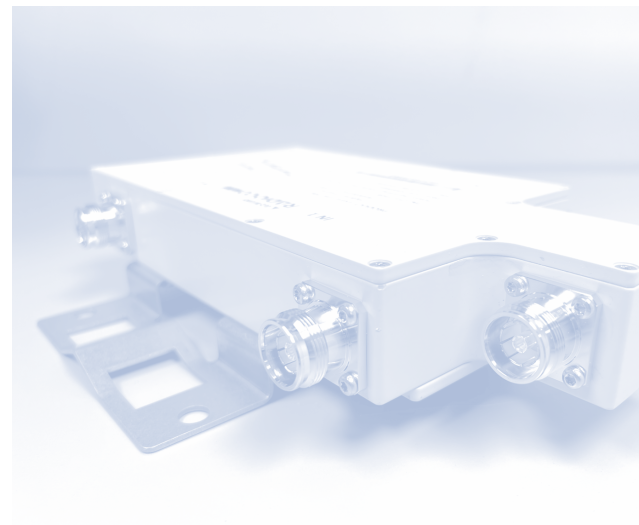
## PIM Performance

-155dBc, -160dBc and -165dBc



We are also able to customize products depending on your project's unique needs. Contact us at [info@acentury.co](mailto:info@acentury.co) or fill out a [customization request form](#).

# Low PIM Hybrid Combiners & Couplers



Hybrid couplers and combiners are RF components which combine or split RF signals from multiple inputs. In in-building DAS applications, the hybrid coupler and combiner is an important network element when combining and splitting RF signals to feed different DAS antennas. Radiocomm features excellent PIM performance (-165dBc) and power handling. With ultra-wide frequency range (520-6000MHz) coverage, Radiocomm low PIM hybrid couplers and combiners support both public safety and 5G Bands.

## Connector Types

Type N (F)  
NEX10(F)  
4.3-10(F)  
7/16 DIN(F)

## Coupling Values

3dB  
4.8dB  
6dB

## Input/Output

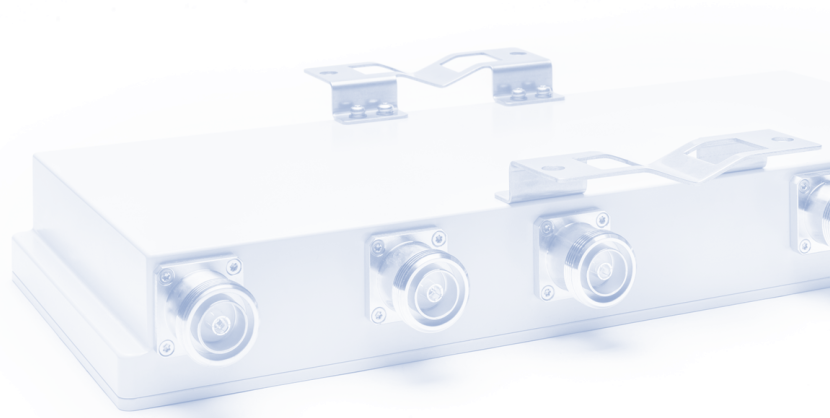
2:1, 3:1, 4:1, 2:2, 3:3, 4:4

## Power Handling

5W, 10W, 25W, 50W,  
100W, 200W



We are also able to customize products depending on your project's unique needs. Contact us at [info@acentury.co](mailto:info@acentury.co) or fill out a [customization request form](#).



## Low PIM Couplers

Low PIM directional/ bi-directional couplers provide flat coupling of one signal path to another with (one direction) directivity and low VSWR. Radiocomm features excellent PIM performance (-165dBc) and power handling. With ultra-wide frequency range (520-6000MHz) coverage, Radiocomm low PIM couplers support both public safety and 5G Bands.

### Connector Types

Type N (F)  
NEX10(F)  
4.3-10(F)  
7/16 DIN(F)

### Power Handling

10W, 100W, 200W

### Direction

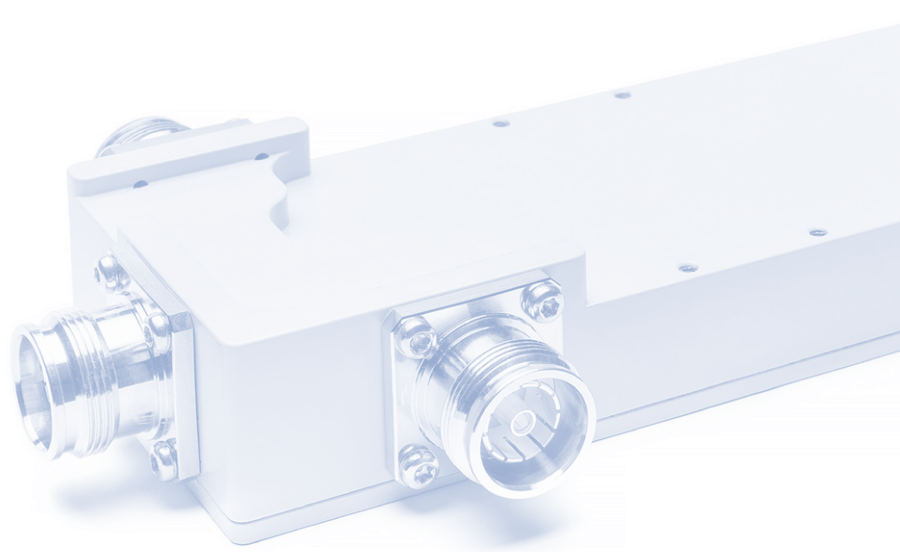
Directional or Bi-directional

### Coupling Values

5dB  
6dB  
7dB  
8dB  
10dB  
12dB  
15dB  
20dB  
25dB  
30dB



We are also able to customize products depending on your project's unique needs. Contact us at [info@acentury.co](mailto:info@acentury.co) or fill out a [customization request form](#).



# RF Splitters

Radiocomm power dividers and splitters offer superior low PIM (-165dBc) performance with ultra-wide frequency coverage (350-6000MHz). Radiocomm splitters supports both public safety and 5G Bands.

## Connector Types

SMA  
Type N  
NEX10  
4.3-10  
7/16 DIN

## Power Handling

5W, 10W, 25W, 50W,  
100W, 200W

## PIM

Low PIM  
Non-Low PIM

## Frequency Range

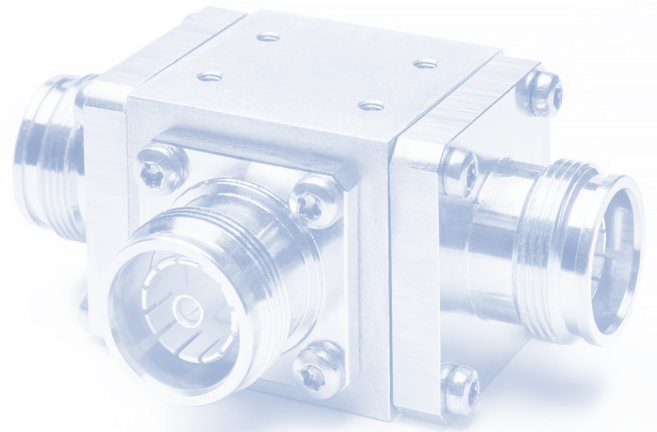
350MHz-6GHz  
600MHz-6GHz  
2-6GHz  
2-8GHz  
17 – 26.5GHz  
1-40GHz  
10-40GHz  
18-40GHz

## Splitting

1:2, 1:3, 1:4, 1:6



We are also able to customize products depending on your project's unique needs. Contact us at [info@acentury.co](mailto:info@acentury.co) or fill out a [customization request form](#).



# RF Signal Tappers

RF Signal Tappers operate similarly to directional couplers but without the directivity. Tappers benefits include broad bandwidths, high durability, and lower cost. Radiocomm low PIM tappers provide -165dBc extra-low PIM and ultra-wide frequency range (350-6000MHz) which covers both public safety and 5G bands.

## Connector Types

Type N  
4.3-10  
7/16 DIN  
NEX10

## Splitting Ratio

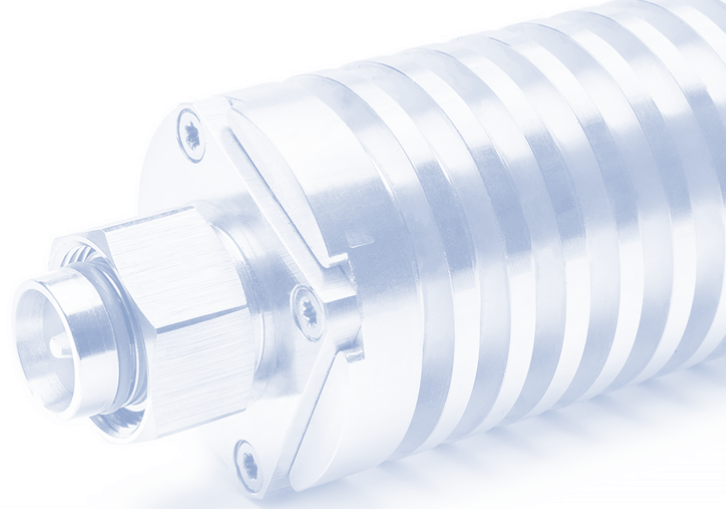
3dB  
4.8dB  
6dB  
8dB  
10dB  
13dB  
15dB  
20dB  
30dB

## Power Handling

200W



We are also able to customize products depending on your project's unique needs. Contact us at [info@acentury.co](mailto:info@acentury.co) or fill out a [customization request form](#).



# Termination Loads

Termination loads, especially low PIM termination loads, are often used in in-building passive, active DAS and small cell systems. Radiocomm's unique design process provides -165dBc extra-Low PIM with excellent heat dissipation characteristics when high RF power is added to the termination loads. The ultra-wide frequency range (520-6000MHz) covers both public safety and 5G Bands.

## Connector Types

SMA Male/Female  
N Male/Female  
NEX10 Male/Female  
4.3-10 Male/Female  
7/16 DIN Male/Female

## Power Handling

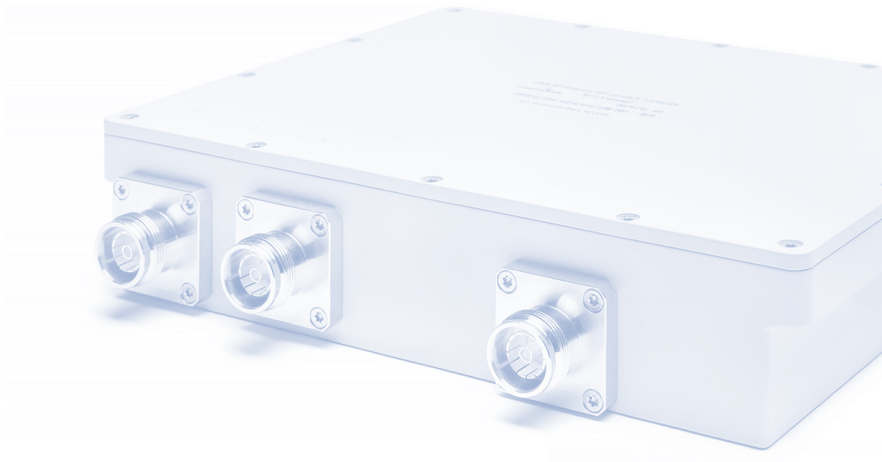
2W  
5W  
10W  
30W  
50W  
100W  
200W

## PIM

Low PIM or non-low PIM



We are also able to customize products depending on your project's unique needs. Contact us at [info@acentury.co](mailto:info@acentury.co) or fill out a [customization request form](#).



## Multi-plexers

Radiocomm offers a wide range of filter-based Multi-plexers such as diplexers, triplexers, quadplexers, 5-plexer, hexaplexer and heptaplexers. Design specifications achieve minimum insertion loss, several power ratings and offer stable low PIM performance. These units can be used for combining multiple narrowband RF signals for cellular systems.

### Connector Types

Type N (f)  
4.3-10 (f)  
7/16 DIN (f)

### Insertion Loss

0.3dB, 0.5dB, 0.8dB, 1dB or  
customized

### Power Handling

50W  
100W  
200W  
500W

### Port to Port Isolation

30dB, 50dB, 80dB or  
customized

### Combiner

Single, double or  
Quad diplexer,  
triplexer, quadplexer,  
5-plexer, hexaplexer  
or heptaplexer



We are also able to customize products depending on your project's unique needs. Contact us at [info@acentury.co](mailto:info@acentury.co) or fill out a [customization request form](#).

# Contact Us

Acentury Inc.  
120 West Beaver Creek Rd, Unit 13,  
Richmond Hill, ON, L4B 1L2, Canada  
[www.acentury.co](http://www.acentury.co)

For sales inquiries, please contact [info@acentury.co](mailto:info@acentury.co)

For custom component requirements, please contact us by email or fill out a [customization request form](#).

